

Material	Material Description
----------	----------------------

Titanium	FS Ti6Al4V FSTA15
----------	----------------------

Aluminum	FS AlSi10Mg
----------	-------------

Maraging Steel	FS 18Ni300
----------------	------------

Inconel	FS IN718 FS IN625 FS GH3536
---------	-----------------------------------

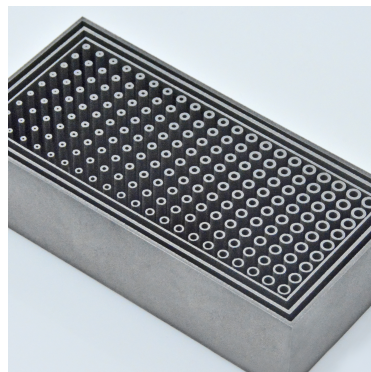
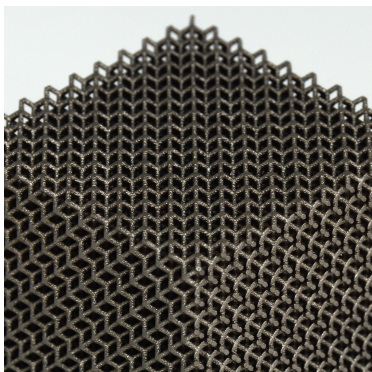
Stainless Steel	FS 420 FS 15-5PH FS 17-4PH FS 316L
-----------------	---------------------------------------------

Cobalt Chrome	FS CoCrMo FS CoCrMoW
---------------	-------------------------

Bronze	FS CuSn10
--------	-----------

Maximum Size: 425 x 425 x 420mm

Surface Finish: Smooth, Sand Blast



Material	Material Description
----------	----------------------

Similar to ABS	CV-UV 9400
----------------	------------

Similar to ABS	SOMOS 8000
----------------	------------

Similar to ABS	9000
----------------	------

Transparent	Somos WaterClear Ultra 10122
-------------	------------------------------

Transparent	Similar to ABS translucent
-------------	----------------------------

High Temp	Genl
-----------	------

From \$0.25 usd/g

Maximum Size: 880 x 880 x 400mm

Surface Finish: Smooth, Paint, Dye, Chrome Plate

## SLS Materials

Material	Material Description
----------	----------------------

PA12	FS3300PA
------	----------

PA12+GF	FS3400GF
---------	----------

From \$0.5 usd/g

Maximum Size: 340 x 340 x 420mm

Surface Finish: Smooth, Paint, Sand Blast, Dye



# FDM Materials

Material	Material Description
Similar to ABS	ASA
	ABS-M30i
	ABS-M30
	ABSi
	ABS-ESD7
PC	PC-ABS
	PC-ISO
	PC
PA	Nylon12CF
	Nylon12
	Nylon6
High Performance Material	TPU 92A
	ULTEM1010
	PPSF/PPSU
	ULTEM9085

From \$0.23 usd/g

Maximum Size: 405 x 355 x 406mm

Surface Finish: FDM Smooth

# MJF Materials

## Material

---

High Reusability PA 11 Glass Beads

---

High Reusability PA 12 Glass Beads

---

High Reusability PA 11

---

High Resulability PA 12

---

From \$0.52 usd/g

Maximum Size: 380 x 284 x 380mm

Surface Finish: Smooth, Paint, Sand Blast